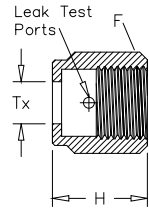
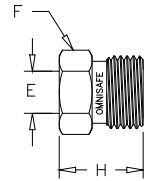


Torque Elimination Fittings (RTS – Rotary Torque Suppression)



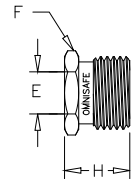
Female Nut

Tube OD	Ordering Number	F Hex Flat		H		Tx		Thread Size
		in.	mm	in.	mm	in.	mm	
1/16	SS-1L-RTS-1	5/16	7.9	.42	10.7	.10	2.5	1/4-28
1/8	SS-2L-RTS-1	7/16	11.1	.53	13.5	.21	5.3	3/8-24
1/4	SS-4L-RTS-1	3/4	19.1	.81	20.6	.36	9.1	5/8-18
3/8	SS-4L-HRTS-1	3/4	19.1	.81	20.6	.39	9.9	5/8-18
1/2	SS-8L-RTS-1	1 1/16	27.1	.88	22.4	.61	15.5	15/16-16
3/4	SS-12L-RTS-1	1 1/2	38.1	1.12	28.4	.89	22.6	1 5/16-18
1	SS-16L-RTS-1	1 3/4	44.5	1.34	34.0	1.20	30.5	1 9/16-20



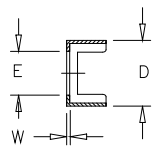
Male Nut

Tube OD	Ordering Number	F Hex Flat		H		E		Thread Size
		in.	mm	in.	mm	in.	mm	
1/16	SS-1L-RTS-4	1/4	6.4	.37	9.4	.10	2.5	1/4-28
1/8	SS-2L-RTS-4	3/8	9.5	.50	12.7	.21	5.3	3/8-24
1/4	SS-4L-RTS-4	5/8	15.9	.71	18.0	.36	9.1	5/8-18
3/8	SS-4L-HRTS-4	5/8	15.9	.71	18.0	.39	9.9	5/8-18
1/2	SS-8L-RTS-4	15/16	23.8	.81	20.6	.61	15.5	15/16-16
3/4	SS-12L-RTS-4	1 5/16	33.3	1.00	25.4	.89	22.6	1 5/16-18
1	SS-16L-RTS-4	1 5/8	41.3	1.19	30.2	1.20	30.5	1 9/16-20



Short Male Nut

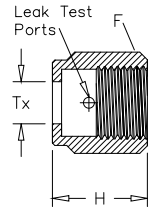
Tube OD	Ordering Number	F Hex Flat		H		E		Thread Size
		in.	mm	in.	mm	in.	mm	
1/4	SS-4L-RTS-4-.54NC	5/8	15.9	.54	13.7	.36	9.1	5/8-18
3/8	SS-4L-HRTS-4-.65NC	5/8	15.9	.65	16.5	.39	9.9	5/8-18



Torque Eliminator

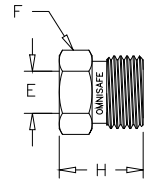
Tube OD	Ordering Number	W Wall Thickness		D		E	
		in.	mm	in.	mm	in.	mm
1/16	SS-1L-RTS-5	.02	.51	.21	5.8	.10	2.5
1/8	SS-2L-RTS-5	.02	.51	.31	7.9	.21	5.3
1/4	SS-4L-RTS-5	.025	.63	.56	14.2	.36	9.1
3/8	SS-4L-HRTS-5	.025	.63	.56	14.2	.39	9.9
1/2	SS-8L-RTS-5	.032	.81	.88	22.3	.61	15.5
3/4	SS-12L-RTS-5	.035	.89	1.23	31.2	.89	22.6
1	SS-16L-RTS-5	.035	.89	1.49	37.9	1.20	30.5

Torque Elimination Fittings (RTS – Rotary Torque Suppression)



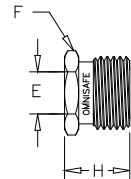
Female Nut

Tube OD	Ordering Number	F Hex Flat		H		Tx		Thread Size
		in.	mm	in.	mm	in.	mm	
1/16	SS-1L-RTS-1	5/16	7.9	.42	10.7	.10	2.5	1/4-28
1/8	SS-2L-RTS-1	7/16	11.1	.53	13.5	.21	5.3	3/8-24
1/4	SS-4L-RTS-1	3/4	19.1	.81	20.6	.36	9.1	5/8-18
3/8	SS-4L-HRTS-1	3/4	19.1	.81	20.6	.39	9.9	5/8-18
1/2	SS-8L-RTS-1	1 1/16	27.1	.88	22.4	.61	15.5	15/16-16
3/4	SS-12L-RTS-1	1 1/2	38.1	1.12	28.4	.89	22.6	1 5/16-18
1	SS-16L-RTS-1	1 3/4	44.5	1.34	34.0	1.20	30.5	1 9/16-20



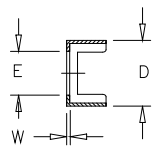
Male Nut

Tube OD	Ordering Number	F Hex Flat		H		E		Thread Size
		in.	mm	in.	mm	in.	mm	
1/16	SS-1L-RTS-4	1/4	6.4	.37	9.4	.10	2.5	1/4-28
1/8	SS-2L-RTS-4	3/8	9.5	.50	12.7	.21	5.3	3/8-24
1/4	SS-4L-RTS-4	5/8	15.9	.71	18.0	.36	9.1	5/8-18
3/8	SS-4L-HRTS-4	5/8	15.9	.71	18.0	.39	9.9	5/8-18
1/2	SS-8L-RTS-4	15/16	23.8	.81	20.6	.61	15.5	15/16-16
3/4	SS-12L-RTS-4	1 5/16	33.3	1.00	25.4	.89	22.6	1 5/16-18
1	SS-16L-RTS-4	1 5/8	41.3	1.19	30.2	1.20	30.5	1 9/16-20



Short Male Nut

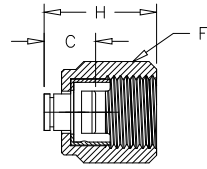
Tube OD	Ordering Number	F Hex Flat		H		E		Thread Size
		in.	mm	in.	mm	in.	mm	
1/4	SS-4L-RTS-4-.54NC	5/8	15.9	.54	13.7	.36	9.1	5/8-18
3/8	SS-4L-HRTS-4-.65NC	5/8	15.9	.65	16.5	.39	9.9	5/8-18



Torque Eliminator

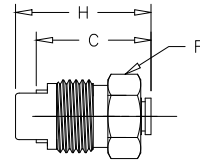
Tube OD	Ordering Number	W Wall Thickness		D		E	
		in.	mm	in.	mm	in.	mm
1/16	SS-1L-RTS-5	.02	.51	.21	5.8	.10	2.5
1/8	SS-2L-RTS-5	.02	.51	.31	7.9	.21	5.3
1/4	SS-4L-RTS-5	.025	.63	.56	14.2	.36	9.1
3/8	SS-4L-HRTS-5	.025	.63	.56	14.2	.39	9.9
1/2	SS-8L-RTS-5	.032	.81	.88	22.3	.61	15.5
3/4	SS-12L-RTS-5	.035	.89	1.23	31.2	.89	22.6
1	SS-16L-RTS-5	.035	.89	1.49	37.9	1.20	30.5

Torque Elimination Fittings (RTS – Rotary Torque Suppression)



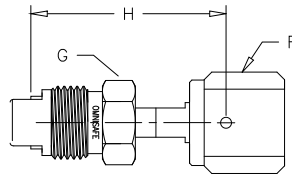
Cap

Ordering Number	C		F Hex Flat	H	
	in.	mm		in.	mm
SS-2L-RTS-CP	0.37	9.42	7/16	0.66	16.8
SS-4L-RTS-CP	0.44	11.2	3/4	0.94	23.9
SS-8L-RTS-CP	0.45	11.4	1 1/16	1.01	25.6
SS-12L-RTS-CP	0.54	13.7	1 1/2	1.29	32.8
SS-16L-RTS-CP	0.63	16.0	1 3/4	1.54	39.1



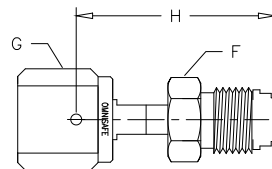
Plug

Ordering Number	C		F Hex Flat	H	
	in.	mm		in.	mm
SS-2L-RTS-PM	0.75	19.1	3/8	0.85	21.6
SS-4L-RTS-PM	0.98	24.9	5/8	1.15	29.2
SS-8L-RTS-PM	1.08	27.4	15/16	1.25	31.7
SS-12L-RTS-PM	1.67	42.4	1 5/16	1.42	36.1
SS-16L-RTS-PM	1.96	49.8	1 5/8	1.69	42.9



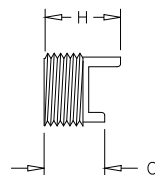
OmniSafe Male to Std Female Connector

Ordering Number	i.d.		G Hex Flat	H		F Hex Flat
	in.	mm		in.	mm	
SS-4L-RTS-STD-MF	0.18	4.6	5/8	1.17	43.4	3/4
SS-8L-RTS-STD-MF	0.40	10.2	15/16	1.84	46.7	1 1/16



OmniSafe Female to Std Male Connector

Ordering Number	i.d.		G Hex Flat	H		F Hex Flat
	in.	mm		in.	mm	
SS-4L-RTS-STD-FM	0.18	4.6	3/4	1.17	43.4	5/8
SS-8L-RTS-STD-FM	0.40	10.2	1 1/16	1.84	46.7	15/16

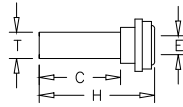


Fixed Male Adaptor

Ordering Number	H		C	
	in.	mm	in.	mm
SS-4L-RTS-4-ADP	0.69	17.5	0.58	14.9
SS-8L-RTS-4-ADP	0.75	19.0	0.60	15.3

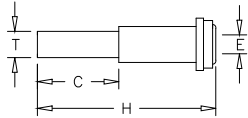
Metal Face Seal Fittings (MGS – Metal Gasket Seal)

Short tube butt weld



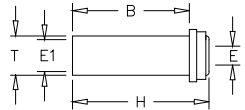
T Tube OD	Ordering Number	C		E		H		Nominal Wall Thickness
		in.	mm	in.	mm	in.	mm	
1/8	2-MGS-3S-2TB7	0.75	19.1	0.06	1.5	1.080	27.4	0.028
1/4	4-MGS-3S-4TB2	0.25	6.4	0.18	4.6	0.600	15.2	0.035
1/4	4-MGS-3S-4TB7	0.75	19.1	0.18	4.6	1.100	27.9	0.035
3/8	8-MGS-3S-6TB2	0.25	6.4	0.31	7.9	0.620	15.7	0.035
3/8	8-MGS-3S-6TB7	0.75	19.1	0.31	7.9	1.120	28.4	0.035
1/2	8-MGS-3S-8TB2	0.25	6.4	0.40	10.2	0.620	15.7	0.049
1/2	8-MGS-3S-8TB7	0.75	19.1	0.40	10.2	1.120	28.4	0.049

Long tube butt weld



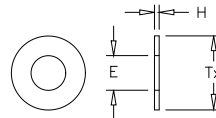
T Tube OD	Ordering Number	C		E		H		Nominal Wall Thickness
		in.	mm	in.	mm	in.	mm	
1/8	2-MGS-3-2TB7	0.75	19.1	0.06	1.5	1.420	36.1	0.028
1/4	4-MGS-3-4TB2	0.25	6.4	0.18	4.6	1.200	30.5	0.035
1/4	4-MGS-3-4TB7	0.75	19.1	0.18	4.6	1.700	43.2	0.035
3/8	8-MGS-3-6TB2	0.25	6.4	0.31	7.9	1.290	32.8	0.035
3/8	8-MGS-3-6TB7	0.75	19.1	0.31	7.9	1.790	45.5	0.035
1/2	8-MGS-3-8TB2	0.25	6.4	0.40	10.2	1.290	32.8	0.049
1/2	8-MGS-3-8TB7	0.75	19.1	0.40	10.2	1.790	45.5	0.049
3/4	12-MGS-3-12TB7	0.75	19.1	0.65	16.5	2.030	51.6	0.049
1	16-MGS-3-16TB7	0.75	19.1	0.87	22.1	2.320	58.9	0.065

High-Flow Tube butt weld



T Tube OD	Ordering Number	B		E		E1		H		Nominal Wall Thickness
		in.	mm	in.	mm	in.	mm	in.	mm	
3/8	4-HMGS-3-.60SR ①	0.41	10.4	0.25	6.4	0.31	7.9	0.60	15.2	0.035
3/8	4-HMGS-3-1.19SR ①	1.00	25.4	0.25	6.4	0.31	7.9	1.19	30.2	0.035

Gaskets Unplated

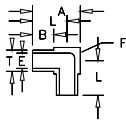


T Tube OD	Ordering Number	E		H		Tx	
		in.	mm	in.	mm	in.	mm
1/8	NI-2-MGS-2-VS	0.09	2.3	0.028	0.7	0.26	6.6
1/8	SS-2-MGS-2-VS	0.09	2.3	0.028	0.7	0.26	6.6
1/4	NI-4-MGS-2-VS	0.22	5.6	0.028	0.7	0.47	11.9
1/4	SS-4-MGS-2-VS	0.22	5.6	0.028	0.7	0.47	11.9
1/2	NI-8-MGS-2-VS	0.44	11.2	0.028	0.7	0.78	19.8
1/2	SS-8-MGS-2-VS	0.44	11.2	0.028	0.7	0.78	19.8
3/4	NI-12-MGS-2-VS	0.66	16.8	0.028	0.7	1.14	29.0
3/4	SS-12-MGS-2-VS	0.66	16.8	0.028	0.7	1.14	29.0
1	NI-16-MGS-2-VS	0.89	22.6	0.028	0.7	1.40	35.6
1	SS-16-MGS-2-VS	0.89	22.6	0.028	0.7	1.40	35.6

① Also available in alloy C-22 (HC22) material.

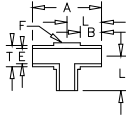
MW – Micro Weld Fittings

90 Degree Union Elbow



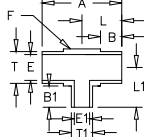
T Tube OD	Ordering Number	A		B		E		F Body Cube	L	
		in.	mm	in.	mm	in.	mm		in.	mm
1/4	4MW-9	0.56	14.2	0.25	6.4	0.18	4.6	5/16	0.41	10.4
3/8	6MW-9	0.69	17.5	0.25	6.4	0.31	7.9	7/16	0.47	11.9
1/2	8MW-9	0.81	20.6	0.25	6.4	0.40	10.2	9/16	0.53	13.5

Union Tee



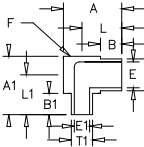
T Tube OD	Ordering Number	A		B		E		F Body Cube	L	
		in.	mm	in.	mm	in.	mm		in.	mm
1/4	4MW-9	0.82	20.8	0.25	6.4	0.18	4.6	5/16	0.41	10.4
3/8	6MW-9	0.94	23.9	0.25	6.4	0.31	7.9	7/16	0.47	11.9
1/2	8MW-9	1.06	26.9	0.25	6.4	0.40	10.2	9/16	0.53	13.5

Reducing Tee



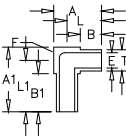
T Tube OD	T Tube OD	Ordering Number	A		B		E		F Body Cube	L		B1		E1		L1	
			in.	mm	in.	mm	in.	mm		in.	mm	in.	mm	in.	mm	in.	mm
3/8	1/4	4MW-3-6-4	0.94	23.9	0.25	6.4	0.31	7.9	7/16	0.47	11.9	0.25	6.4	0.18	4.6	0.47	11.9
1/2	1/4	6MW-3-8-4	1.06	26.9	0.25	6.4	0.40	10.2	9/16	0.53	13.5	0.25	6.4	0.18	4.6	0.53	13.5
1/2	3/8	8MW-3-8-6	1.06	26.9	0.25	6.4	0.40	10.2	9/16	0.53	13.5	0.25	6.4	0.31	7.9	0.53	13.5

Reducing Elbow



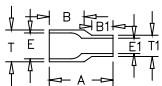
T Tube OD	T1 Tube OD	Ordering Number	A		B		E		F Body Cube	L		A1		B1		E1		L1	
			in.	mm	in.	mm	in.	mm		in.	mm	in.	mm	in.	mm	in.	mm	in.	mm
3/8	1/4	4MW-9-4	0.69	17.5	0.25	6.4	0.31	7.9	7/16	0.47	11.9	0.69	17.5	0.25	6.4	0.18	4.6	0.47	11.9
1/2	1/4	6MW-9-4	0.81	20.6	0.25	6.4	0.40	10.2	9/16	0.53	13.5	0.81	20.6	0.25	6.4	0.18	4.6	0.53	13.5
1/2	3/8	8MW-9-6	0.81	20.6	0.25	6.4	0.40	10.2	9/16	0.53	13.5	0.81	20.6	0.25	6.4	0.31	7.9	0.53	13.5

Extended Leg 90 Degree



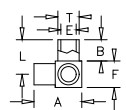
T Tube OD	Ordering Number	A		A1		B		B1		E		F Body Cube	L		L1	
		in.	mm	in.	mm	in.	mm	in.	mm	in.	mm		in.	mm	in.	mm
1/4	4MW-9-03442	0.56	14.2	0.76	19.3	0.25	6.4	0.45	11.4	0.18	4.6	5/16	0.41	10.4	0.61	15.5
1/4	4MW-9-03443	0.56	14.2	0.81	20.6	0.25	6.4	0.50	12.7	0.18	4.6	5/16	0.41	10.4	0.66	16.8
1/4	4MW-9-03444	0.76	19.3	0.76	19.3	0.45	11.4	0.45	11.4	0.18	4.6	5/16	0.61	15.5	0.61	15.5
1/4	4MW-9-03445	0.81	20.6	0.81	20.6	0.50	12.7	0.50	12.7	0.18	4.6	5/16	0.66	16.8	0.66	16.8

Reducing Union



T Tube OD	T1 Tube OD	Ordering Number	A		B		B1		E		E1	
			in.	mm	in.	mm	in.	mm	in.	mm	in.	mm
3/8	1/4	6MW-6-4	0.75	19.1	0.41	10.4	0.25	6.4	0.31	7.9	0.18	4.6
1/2	1/4	8MW-6-4	0.75	19.1	0.41	10.4	0.25	6.4	0.40	10.2	0.18	4.6
1/2	3/8	8MW-6-6	0.75	19.1	0.41	10.4	0.25	6.4	0.40	10.2	0.31	7.9

Tribow



T Tube OD	Ordering Number	A		B		E		F Body Cube	L	
		in.	mm	in.	mm	in.	mm		in.	mm
1/4	4MW-91	0.56	14.2	0.25	6.4	0.18	4.6	5/16	0.41	10.4
3/8	6MW-91	0.69	17.5	0.25	6.4	0.31	7.9	7/16	0.47	11.9
1/2	8MW-91	0.81	20.6	0.25	6.4	0.40	10.2	9/16	0.53	13.5

Material 316L Stainless Steel